

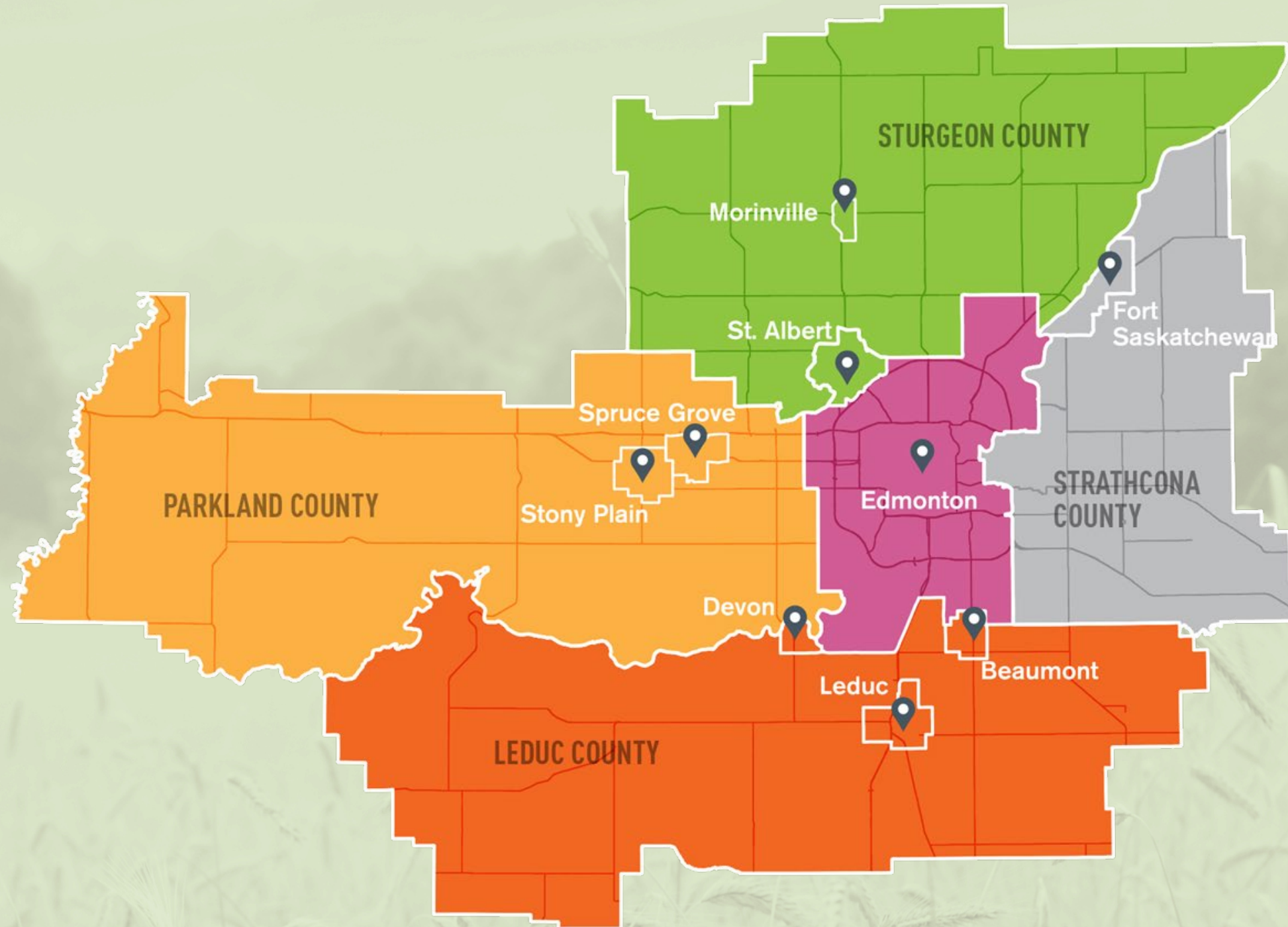
# EMRB & The Regional Mindset

UDI Luncheon  
November 21, 2019

Karen Wichuk, CEO  
Edmonton Metropolitan Region Board

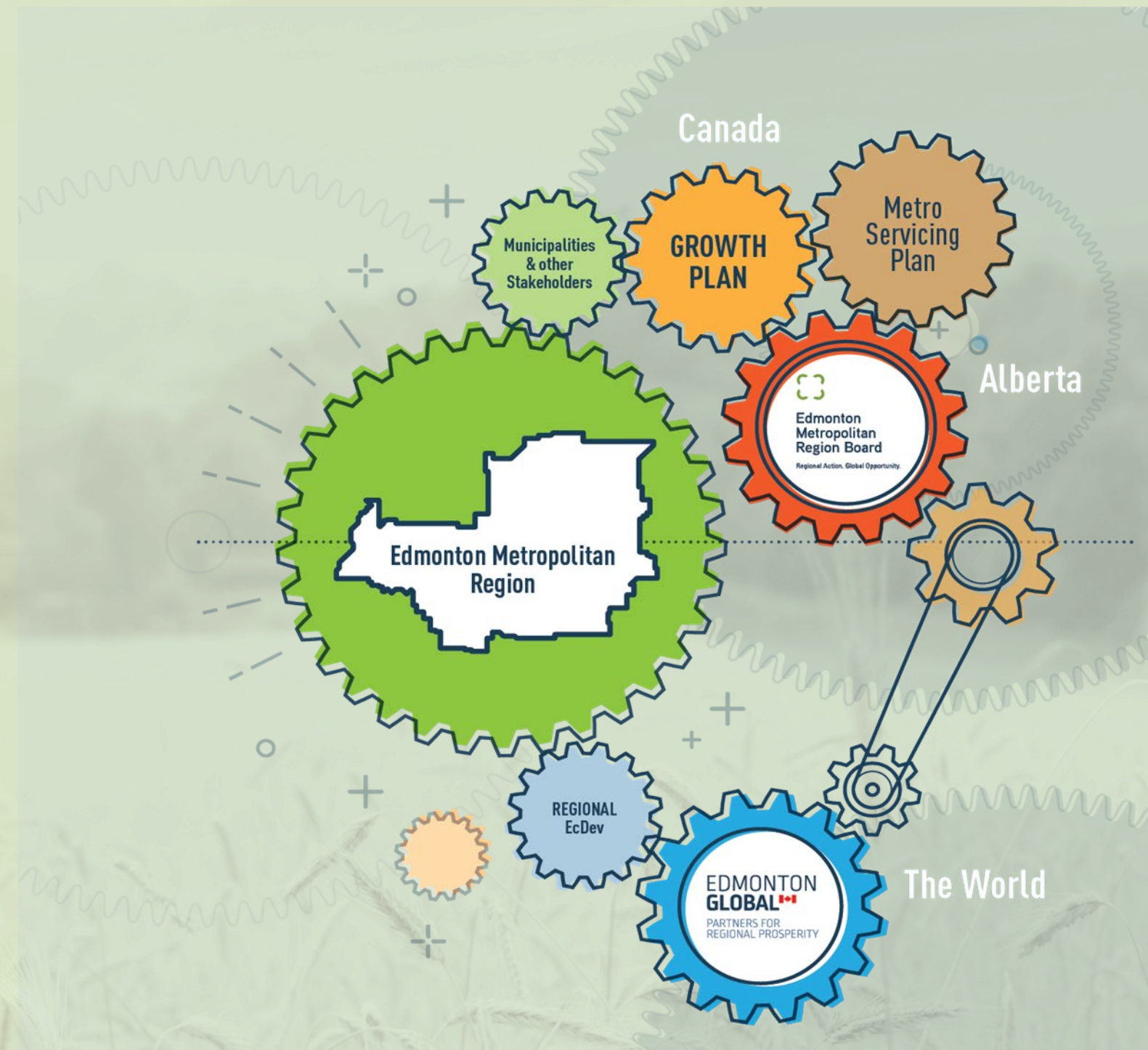


# THE REGION





# EMBRACING A REGIONAL MINDSET





# REGIONAL EVALUATION FRAMEWORK

YEAR	NUMBER OF APPLICATIONS	RECOMMENDATIONS TO APPROVE
2013	14	12
2014	10	10
2015	15	15
2016	7	7
2017	18	18
2018	11	10
2019	19	19



# REF PERFORMANCE STANDARD

- Nearly 98% approval rate for REF applications
- Average turnaround time of 15 working days on REF applications under current REF process.



# REF ENGAGEMENT

- **12 REF Regional Working Group meetings since August 2018**
- **150 attendees at Municipal REF Workshops**
- **January 22 – UDI and EMRB meeting**
- **March 11 – UDI and EMRB meeting**
- **July 4 – Joint CAO and UDI meeting on REF**
- **July 15 – Growth Plan & REF Workshop hosted for UDI-ER**



# REF REFINED

- Refinement and clarification of the REF Planning Toolkit
- Substantive Amendments to improve clarity and definitions
- Removing REF process for density increases near LRT
- Clarification of Sub-Area Plan amendments
- Enhanced definition of “Regionally Significant” growth
- Removing REF process for new Intermunicipal Development Plans



# REF REFINED

- Improved interpretation of REF and Growth Plan
- Efficient and informed decision-making tool
- Removing unnecessary administrative process and burden
- Reducing delays for industry
- Improving certainty for industry and municipalities



# REF PROCESS IMPROVEMENT



Revised October 2019



Anticipated **46% reduction** in REF applications creating greater confidence and certainty in the development process for municipalities and industry.



# REGIONAL IMPERATIVE

- 1.3M regional citizens - Projected to grow to 2.2 million by 2044
- 725,000K jobs - Projected to grow to 1.2 million by 2044
- \$100B in economic activity – 1/3 of Alberta's GDP
- Second youngest and second fastest growing metropolitan region in Canada
- 1,775KM of pipelines and 1.7M acres of agricultural land located in the Region
- 5th busiest airport in Canada with over 7M passengers annually



# EMR GROWTH PLAN



- Compact development and efficient infrastructure
- A multi-modal and integrated regional transportation system
- Complete communities and housing diversity
- A diverse, globally competitive economy and prosperous region
- Healthy and resilient natural living systems and climate change adaptability
- Thriving agricultural sector with an integrated regional food system.



# PARTNERS IN REGIONAL PROSPERITY

Through coordinated, responsible, and collaborative growth, the Growth Plan can realize \$5B in cost efficiencies and 162 sq. km in land savings contributing to greater investment readiness, economic competitiveness, and an exceptional quality of life.



# EMRB & The Regional Mindset

## THANK YOU

 **Edmonton Metropolitan  
Region Board**  
Regional Action. Global Opportunity.

Karen Wichuk, CEO  
Edmonton Metropolitan Region Board

 **BEAUMONT**

 **TOWN OF  
Devon**  
ALBERTA

 **Edmonton**

 **CITY OF  
FORT SASKATCHEWAN**

 **CITY OF  
Leduc**

 **LEDUC  
COUNTY**

 **Morinville**

 **parkland  
county**

 **The City of  
SPRUCE GROVE**

 **St. Albert**  
Alberta, Canada

 **TOWN OF  
STONY  
PLAIN**

 **STRATHCONA  
COUNTY**

 **Sturgeon  
County**